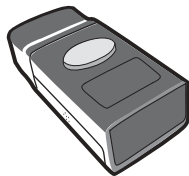


WIRELESS DONGLE

Quick Guide



FCC WARNING STATEMENT

This equipment has been tested and found to comply with the limits for a Class B digital device, pursuant to Part 15 of the FCC Rules. These limits are designed to provide reasonable protection against harmful interference in a residential installation.

This equipment generates, uses and can radiate radio frequency energy and, if not installed and used in accordance with the instructions, may cause harmful interference to radio communications. However, there is no guarantee that interference will not occur in a particular installation. If this equipment does cause harmful interference to radio or television reception, which can be determined by turning the equipment off and on, the user is encouraged to try to correct the interference by one of the following measures:

- Reorient or relocate the receiving antenna.
- Increase the separation between the equipment and receiver.
- Connect the equipment into an outlet on a circuit different from that to which the receiver is connected.
- Consult the dealer or an experienced radio/TV technician for help.

CANADIAN DOC STATEMENT

This digital apparatus does not exceed the Class B limits for radio noise for digital apparatus set out in the Radio Interference Regulations of the Canadian Department of Communications.

Le présent appareil numérique n'émet pas de bruits radioélectriques dépassant les limites applicables aux appareils numériques de la classe B prescrites dans le Règlement sur le brouillage radioélectrique édicté par les ministères des Communications du Canada.

CE MARKING AND EUROPEAN UNION COMPLIANCE

Testing for compliance to CE requirements was performed by an independent laboratory. The unit under test was found compliant with all the applicable Directives, 2004/108/EC and 2006/95/EC.

WASTE ELECTRICAL AND ELECTRONIC EQUIPMENT

The WEEE directive places an obligation on all EU-based manufacturers and importers to take-back electronic products at the end of their useful life.

ROHS STATEMENT OF COMPLIANCE

This product is compliant to Directive 2002/95/EC.

NON-MODIFICATION STATEMENT

Changes or modifications not expressly approved by the party responsible for compliance could void the user's authority to operate the equipment.



WARNING AND CAUTION



1. Take any metals into contact with the terminals in connectors.
2. Use the scanner where any inflammable gases.



If following condition occur, immediately power off the host computer, disconnect the interface cable, and contact your nearest dealer.

1. Smoke, abnormal odors or noises come from the scanner.
2. Drop the scanner so as to affect the operation or damage its housing.

Do not do behavior below.

1. Put the scanner in places excessively high temperatures such as expose under direct sunlight.
2. Use the scanner in extremely humid area or drastic temperature changes.
3. Place the scanner in oily smoke or steam environment such as cooking range.
4. Be covered or wrapped up the scanner in bad-ventilated area such as under cloth or blanket.
5. Insert or drop foreign materials or water into scanning window or vents.
6. Using the scanner while hand is wet or damp.
7. Use the scanner with anti-slip gloves containing plasticizer and chemicals or organic solvents such as benzene, thinner, insecticide etc to clean the housing. Otherwise, it could not result fire and electrical shock but housing may be broken and injured.
8. Scratch or modify the scanner and bend, twist, pull or heat its interface cable.
9. Put heavy objects on interface cable.



Do Not

Do not stare the light source from the scanning window or do not point the scanning window at other people's eyes or eyesight may be damaged by direct exposure under the light.

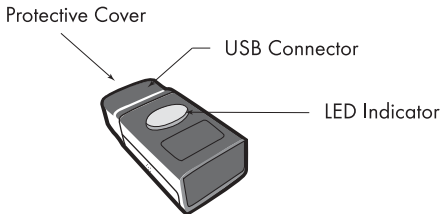


Do not put the scanner on an unstable or inclined plane. The scanner may drop, creating injuries.



Once the interface cable is damaged such as exposed or broken copper wires, stop using immediately and contact your dealer. Otherwise, it could result fire or electrical shock.

INTRODUCTION



SPECIFICATIONS

Housing	Plastic(PC)
Profile	BT HID
Interface	USB HID
Power Supply	5 VDC
Working Current	60mA
Radio	Bluetooth 2.1 + EDR (Class2)
Coverage	10M/33ft. (line of sight)
Operating Temp	0 to 50 °C
Storage Temp	-20 to 60 °C
Number of Device Connected	Up to 7 readers

LED INDICATION

Off	Power off
Flashing Blue	Discoverable
Solid Blue	Connected
Flashing Red	Initializing
Solid Red	Connection Failed

OUT OF THE BOX



Wireless Dongle



Set Connection Label x 2



USB Extension Cable



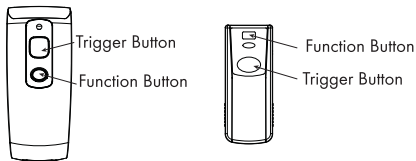
Quick Guide

For Wireless Barcode Reader

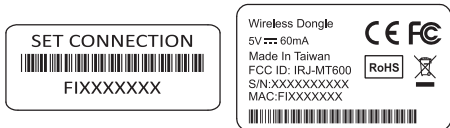
I. Establish Connection

STEP 1. Plug Wireless Dongle to host PC.

STEP 2. Activate Wireless Barcode Reader by pressing its trigger button for 1 second.



STEP 3. Scan the "SET CONNECTION" barcode OR the barcode on the product label to establish connection.



*The LED indicator of Wireless Dongle will turn solid blue when connection is successfully established.

II. Disconnect from Wireless Dongle

Press and hold the Function Button of the Wireless Barcode Reader for 5 seconds OR scan the "DISCONNECT" barcode below:

Disconnect



*The Wireless Barcode Reader's connection record on the Wireless Dongle will also be deleted with this action.

For Wireless Barcode Reader

III. Clear All Pairing Records on the Wireless Dongle

The Wireless Dongle can hold as many as 7 readers' pairing record. If the reader doesn't disconnect from the Wireless Dongle (using method described in Chapter II), its record will be stored in the Wireless Dongle, making the 8th reader unable to establish connection with the dongle. To clear all records of the readers' connection, simply do this:

STEP 1. Make sure your Wireless Barcode Reader is connected to Wireless Dongle.

STEP 2. Scan "CLEAR ALL" barcode for 5 seconds to clear all pairing records stored in the Wireless Dongle.

. B031\$



Clear All

STEP 3. Press and hold the Function Button of the Wireless Barcode Reader for 5 seconds OR scan the "DISCONNECT" barcode to avoid reconnection initiated by the Wireless Barcode Reader.

Disconnect



*The LED indicator of Wireless Dongle will turn flashing blue when it is disconnected.

For Wireless RFID Reader

I. Driver & Utility Installation

STEP 1. Install VCP driver (VCPDriver_Vx.x.x_Setup.zip) on the Host PC.

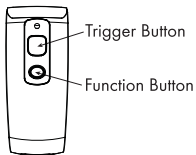
STEP 2. Install RFID Utility (RFID_setup.exe) on the Host PC.

II. Establish Connection

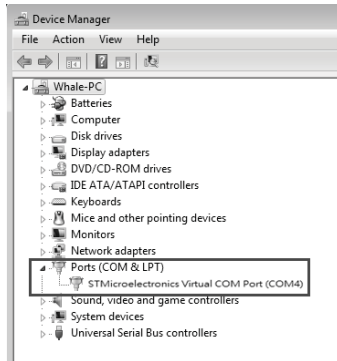
STEP 1. Plug Wireless Dongle to Host PC, its LED will be flashing in blue.

STEP 2. Connect the RFID reader to the Host PC with a micro USB cable.

STEP 3. Press and hold the RFID reader's Function button without releasing, then press and hold the Trigger button. After pressing both buttons for 5 seconds, the reader will emit two short beeps, with LED indicator turning solid green. Now the reader has entered Configuration Mode.



STEP 4. Open the Host PC's Device Manager window and check if the USB Virtual COM device has been detected.



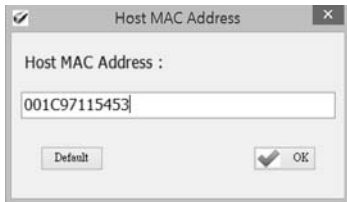
STEP 5. Open the RFID Utility, set the COM port as appropriate and click [Link] to enter the program's main window.

For Wireless RFID Reader

STEP 6. Double-click the Communication Interface, select "Wireless Dongle" and click OK.

STEP 7. Go to Normal / Communication Interface / Bluetooth / Host MAC Address and double-click on Host MAC Address to enter the Wireless Dongle's MAC address.


STEP 8. Replace "FIX" with "001C97".
For example, if the MAC address of your Wireless Dongle is FIX115453, then enter 001C97115453 onto the input field and click OK.



STEP 9. Click the Upward Arrow icon on the toolbar to update parameters onto the RFID reader.



STEP 10. Once the progress bar completes, the RFID reader is successfully updated.

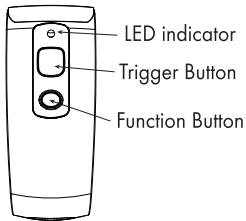
STEP 11. Exit the RFID Utility by clicking the  icon.

STEP 12. The RFID reader will emit two beeps as indication that it has successfully connected to the pre-set Wireless Dongle. Meanwhile, the Wireless Dongle will turn its LED to solid Blue as indication that a connection has been established.

For Wireless RFID Reader

III. Disconnect from Wireless Dongle

Long press and hold the Function Button for 5 seconds without releasing. The Wireless RFID Reader will emit three (3) beeps and the blue LED will start flashing in blue as confirmation that the reader is discoverable by the host.



*The Wireless RFID Reader's connection record on the Wireless Dongle will also be deleted with this action.

IV. Clear All Pairing Records on the Wireless Dongle

The Wireless Dongle can hold as many as 7 readers' pairing record. If the reader doesn't disconnect from the Wireless Dongle (using method described in Chapter III), its record will be stored in the Wireless Dongle, making the 8th reader unable to establish connection with the dongle. To clear all records of the readers' connection, simply do this:

- STEP 1. Make sure your Wireless RFID Reader is connected to the Wireless Dongle.
- STEP 2. Press and hold the RFID reader's Function button first without releasing, then press and hold the Trigger button. After pressing both buttons for about 5 seconds, the RFID reader will emit two short beeps, turn on Green LED indicator, and enter Configuration Mode.
- STEP 3. Long press on the Trigger Button for 5 seconds without releasing. The unit will emit five (5) beeps and the blue LED will start flashing as confirmation that all records on the Wireless Dongle has been cleared.